

# bodyline® Polishing Process Chart



## 1. Bodyline Polishing Products

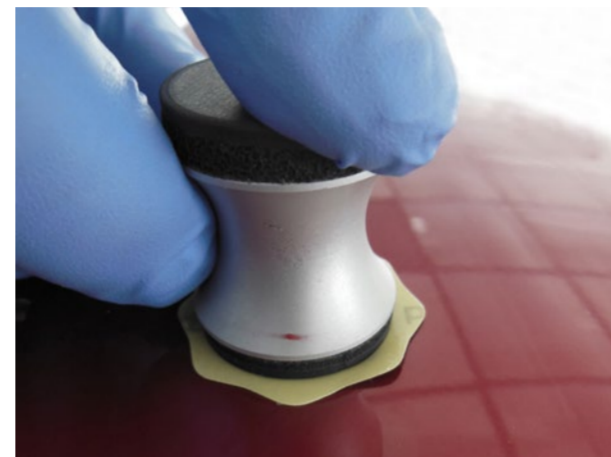
The full Bodyline polishing range



## 2. Precleaning

Clean the panel before denibing.

Top Tip—this helps to see the inclusions clearly and prevents contamination causing rogue scratches.



## 3a. Small Area Inclusion Removal

For small isolated dirt inclusions, use the denib block with the denib abrasive disc.

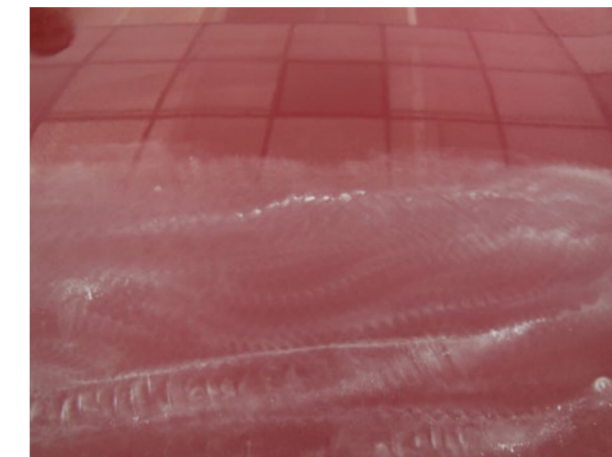
Top Tip—use the Bodyshine to lubricate the abrasive.



## 3b. Large Area Inclusion Removal

For larger areas with more inclusions, use the P 1500 Film Disc on a 3/5mm DA Sander.

Top Tip—use an interface DA pad to soften the abrasion.



## 4. Sanding Area

Check all the dirt inclusions have been removed and wipe the dust away.



## 5. Bodyshine Application

Use the 2000 grit Blend and Finish to remove the P1500 scratches.

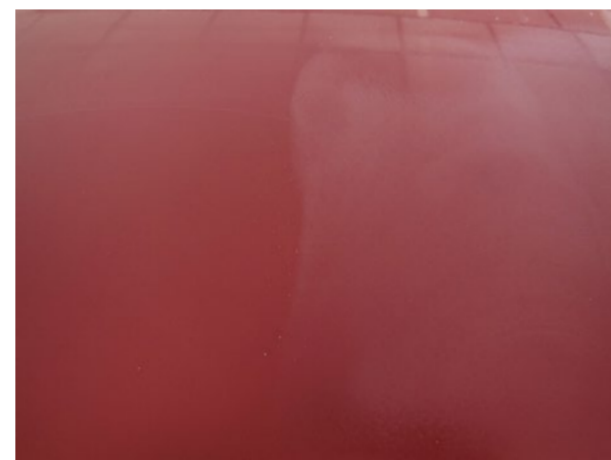
Top Tip—use the Bodyshine to lubricate and help the cut of the 3000 grit Blend and Finish pad



## 6. Sanding with 2000 B+F and Bodyshine

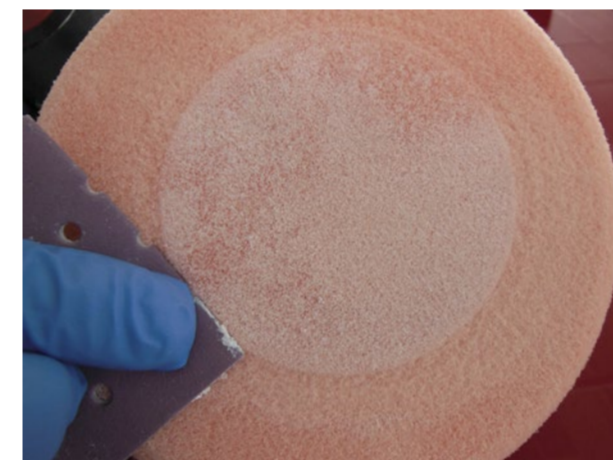
Remove the scratches using a DA sander keeping the surface damp.

Top Tip—disconnect dust extraction while using bodyshine.



## 7. 2000 Grade Sanding vs P1500 Sanding

The difference between the P 1500 film and 3000 grit Blend and Finish is clearly evident, the gloss should now be returning within the bare substrate area.



## 8. Foam Head Cleaning

Start with the orange compounding head. Cleaning the head is vital to remove dried polish and prevent hologram scratches.

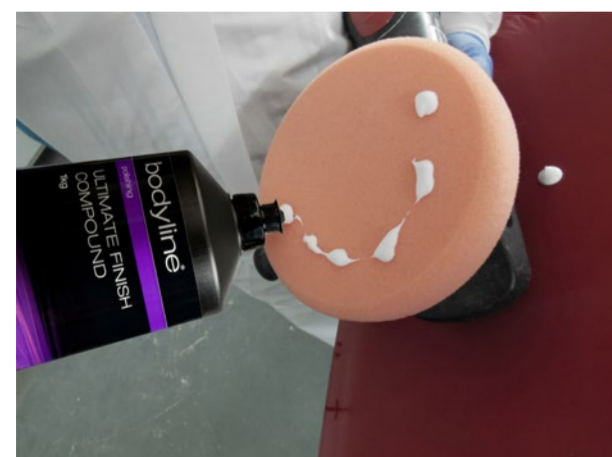
Top Tip—this is best done dry, by holding a coarse abrasive against the head, while being spun gently.



## 9. Application of Polish

Apply a small amount of polish to the panel.

Top Tip—too much polish will prevent the compounding head from cutting.



## 9. Conditioning of Polishing Foam

The polishing head needs conditioning before you start, apply a small amount across the entire surface area.

Top Tip—this prevents initial heat build up and scratching.



## 10. 1st Step Compounding

Start the machine with the head placed on the panel, set at about 1400 RPM and keep moving, breaking down the compound.

Top Tip—wipe the polish lightly into the head, prior to starting the machine to prevent excess compound 'flying'



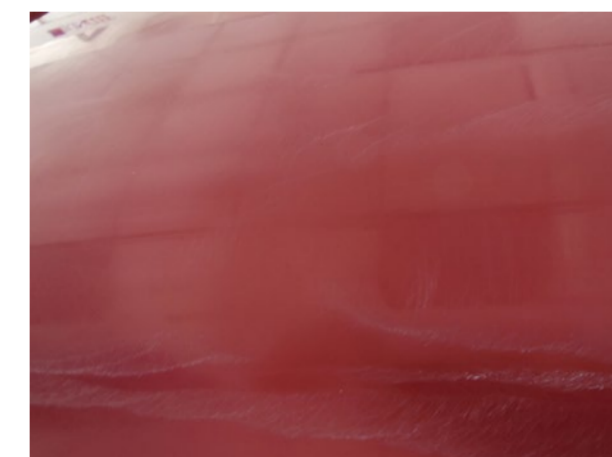
## 11. 2nd Stage Finishing Polishing

Leave the polish on the panel and swap to the black polishing head, clean the head as before, polish with what compound is left on the panel to give final gloss finish.



## 12. Cleaning and Checking

Clean with the Bodyshine spray and microfiber cloth to remove any polish and check the final finish.

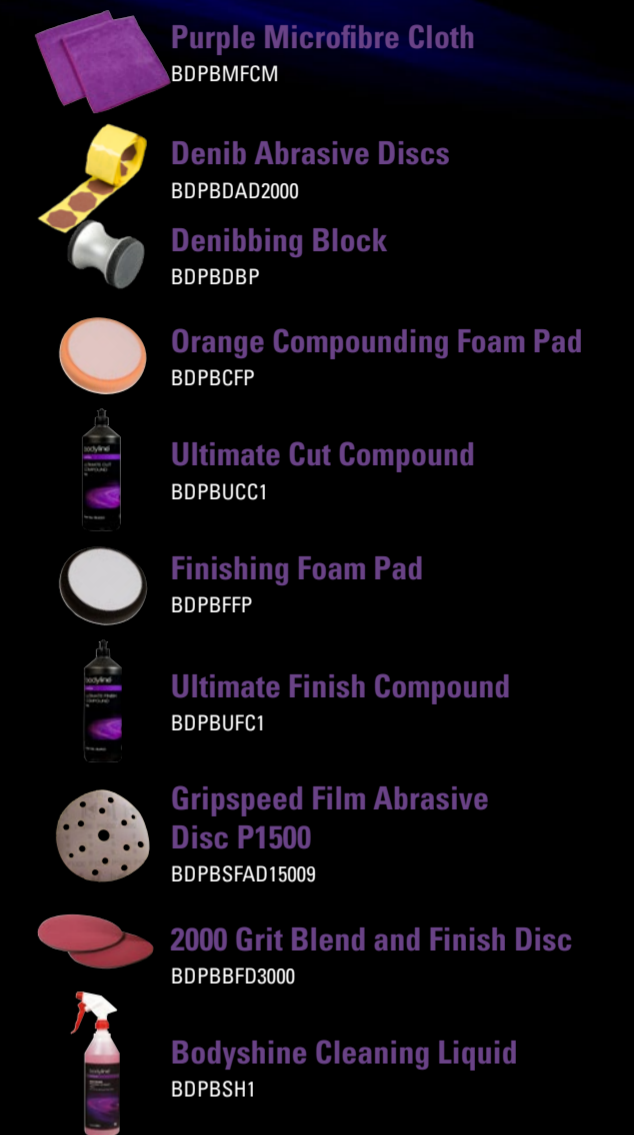


## 13. Creating Fine Compound

Keep polishing until you are happy the scratches are removed and that the polish has been broken down to a very fine compound.

Top Tip—polish in sections e.g. wings in halves, bonnets in quarters

## Products:



## Health & Safety in the bodyshop:

- Ensure that the working area is clean and tidy
- Wear protective ear and eye equipment
- Wear suitable respiratory equipment when working with hazardous materials
- Wear protective gloves
- Lubricate sander as per manufacturer's instructions
- Non lubrication can cause damage to the machine

www.brownbrothers.com

The PPG Logo and BODYLINE® are registered trademarks of PPG Industries Ohio, Inc.

© 2018 PPG Industries, all rights reserved.

